



ADTECH
Analog-Digital Technology, Inc.

The Adtech Model IPS 2402 AC to DC power supply provides an ideal solution for powering Two-wire and Three-wire instruments.

The IPS 2402 accepts 115 VAC or 230 VAC (jumper selectable) and provides an isolated output of 26 VDC at 50 mADC.

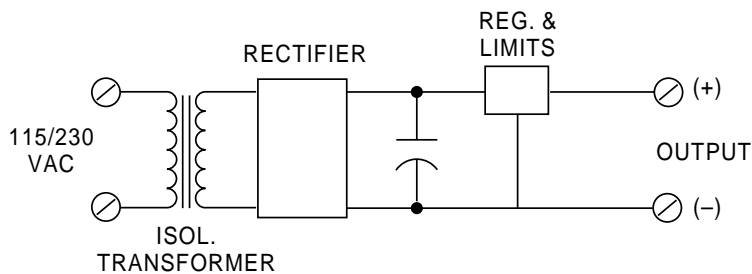
It can power up to (2) two 4-20 mA loops such as Adtech's 100, 200 or 300 Series instruments, or up to (16) sixteen of Adtech's Low Power 300L Series transmitters.

The output is diode coupled facilitating auctioneering with other 24 VDC power supplies.

The output is also over voltage and short circuit protected which provides power supply security and high loop integrity.

The IPS 2402 provides 1500 VAC or 2100 VDC Hipot isolation.

DIN mounting is supplied as standard. Surface mount (option H 26) and snap track (Option H 25) are available at no extra cost, specify.



Features

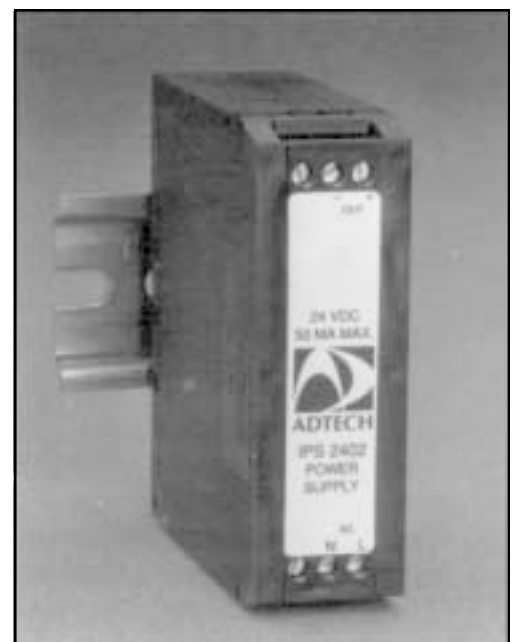
- 115 vac or 230 vac $\pm 10\%$
- 47 to 440 Hz input
- 26vdc output, diode coupled for ease of auctioneering
- Output: short-circuit and over-voltage protected
- Input-output isolation 1500 VAC, 2100 VDC Hipot.

Instrument Power Supply AC to DC

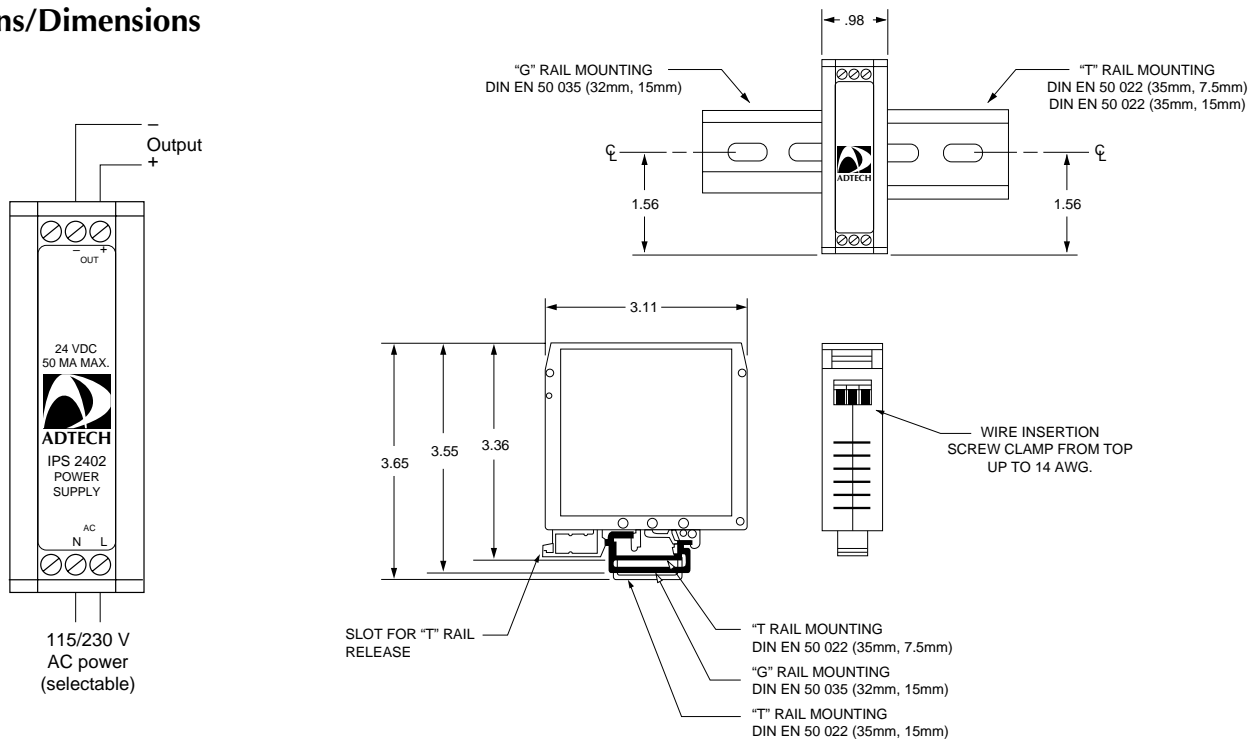
Model No. **IPS 2402**

Typical Applications

- Power Two - Wire Transmitter
- Power Three - Wire Transmitter
- Provide Isolated DC Power
- Provide excitation power for sensors.



Connections/Dimensions



Input/Output

Input Power:
 115 VAC $\pm 10\%$, 50/60 Hz, .7 pf
 or
 230 VAC $\pm 10\%$, 50/60 Hz, .7 pf
 Field jumper selectable

Output Voltage:
 26 VDC $\pm 5\%$ @ 50ma.
 24 VDC min., 28 VDC max. under
 all line and load conditions

Performance

Output Regulation: $\pm 2\%$ (line and load)
Output Current Limit: 65 mA DC max.
Output Auctioneering: Diode coupled output
Output Overload: Indefinite short circuit 65 mA max.
Output Ripple: 15 mV p-p max.
Output Isolation: Input/output/housing: 1500 vac, 2100 VDC Hipot.
Temperature Range: Operating: -31°C to 70°C (-24°F to 158°F)
 Storage: -40°C to 85°C (-40°F to 185°F)

Power

See Input (no separate power)

Mechanical

Electrical Classification: General purpose
Connection: Screw compression type
 accepts up to 14 AWG
Mounting: DIN Standard: Optional surface, snap
 track or Nema 4, 7.
Weight: Net unit: 6.0 oz (170 grams)
 Shipping: 10 oz (283 grams)

Options

Option Number	Description
H 15D	Explosion Proof: Class 1, Group B,C & D
H 25	Snap-Track Mount (Specify)
H 26	Surface Mounting (Specify)
H 27	NEMA 4 Enclosure
H 29	T 35 DIN "T" rail two feet long
H 30	T 32 DIN "G" rail two feet long
P 5	230 VAC Prime power

Ordering Information

- Model number
 - Prime Power
 - Housing and miscellaneous options
- Please refer to the Housing and/or Option Section for more specific and detailed information.*

Represented by:



Analog-Digital Technology, Inc.
 3750 Monroe Avenue
 Pittsford, New York 14534-1302
 Phone: (716) 383-8280
 Fax: (716) 383-8386
 E Mail: adtech@adtech-inst.com
 Web site: <http://www.adtech-inst.com>

Information subject to change without notice.